



mineral resources

Department:
Mineral Resources
REPUBLIC OF SOUTH AFRICA



**MPUMALANGA
PROVINCIAL
GOVERNMENT**

MPUMALANGA MINING LEKGOTLA

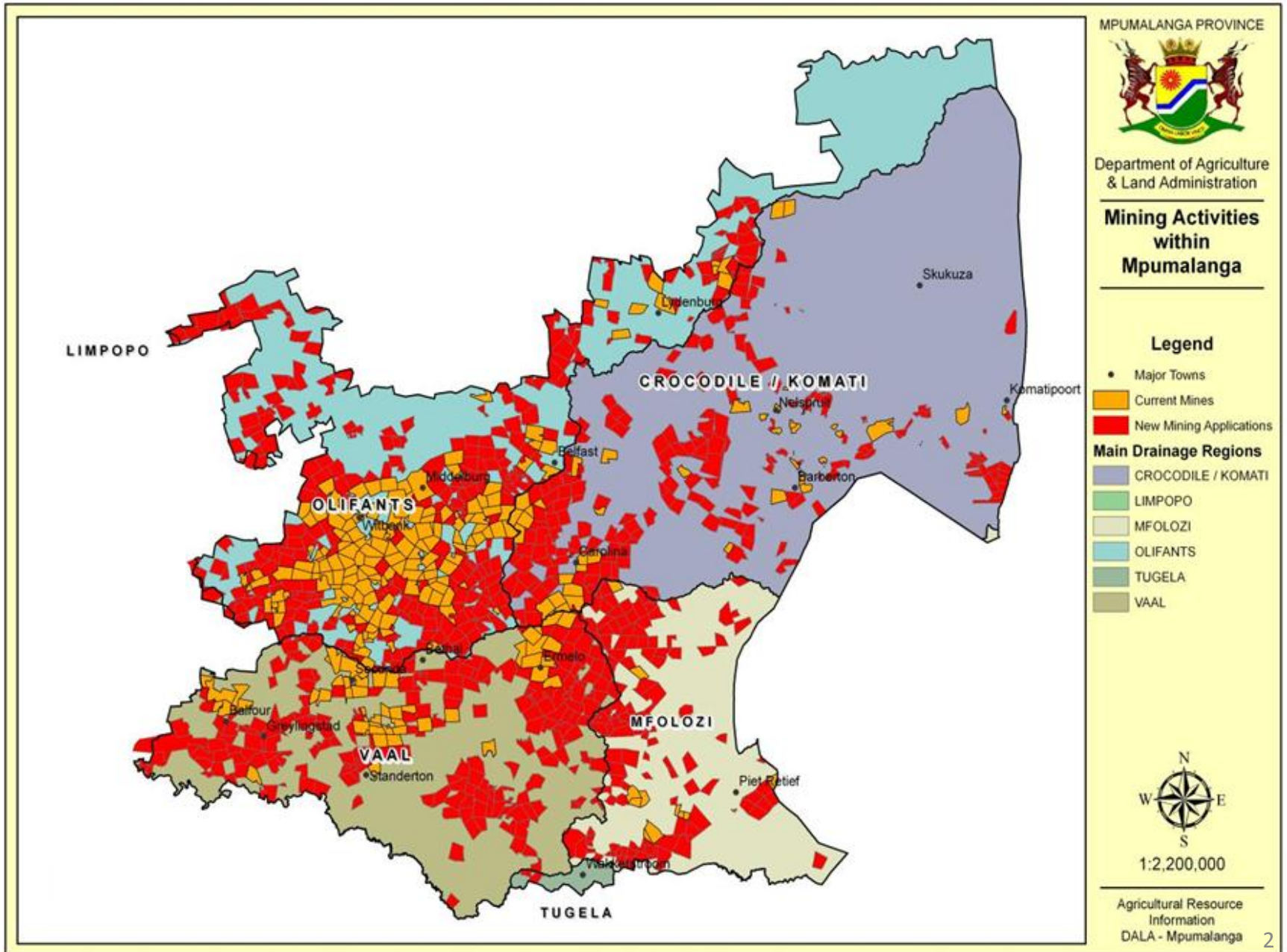
“Towards mining for sustainable development”

COMMISSION 4

SUSTAINABLE DEVELOPMENT AND THE ENVIRONMENT

2 November 2012

MINING IN MPUMALANGA



IMPACT OF UNSUSTAINABLE MINING

A recent paper by N.L Baartjes and K.G Gounden entitled “Causes of Mine Decline in South Africa” (adopted from a presentation by Mr Peter Lukey)

“South Africa has in excess of 6 000 derelict and ownerless mines. These mines are so termed because they have no legally identifiable owner and their legacy effects have been assumed by the state. In South Africa these represent in excess of 40 minerals and commodities including PGM, gold, diamond and coal mines. In assuming the liability for these mines it is at present not considered that these mines will be re-evaluated and re-opened in the foreseeable future.”

The overwhelming assumption appears to be that these were all closed due to geological factors. This incorrect assumption or blanket approach has meant that many small, near surface deposits that were partly mined remain inaccessible to the rural populations that live close to it. This is an example of resource sterilisation.”

and

“...the 6,000 derelict and ownerless mines in South Africa represent an economic opportunity. They are typically near surface occurrences which are easier to mine and can be rejuvenated.”

MINE REHABILITATION

| Project | Performance Indicator/measure | Key Activities to achieve output | milestones | timeline | Responsible person/organisation |
|---|---|---|---|--|---|
| Mine Rehab Levy (policy intervention) – current and future operations | Adequacy of current regulatory provisions | Compliance Monitoring (with appropriate incentives and penalties); (define appropriate monitoring parameters, e.g. Define physical parameters for environmental monitoring) | Mining Environmental Regulation Appraisal Report | 31/06/2013 (Progress reports at 3 month intervals) | Industry Government (Re-introduction of the Excellence in Mine Environmental Management) |
| Derelict and ownerless mine rehab | Status of D&O mines in MP | Audit of number of mines, nature and extent of pollution/ degradation (most of the required information already available) | Status Report and Database on D&O mines in MP | 31/03/2013 | Government (DMR) |
| Id of extent of mining degradation | Problem Statement | Information gathering exercise | State of the Environment Report in Mining Areas in MP | 31/06/2013 | Government (DMR; DWA; DEA and DEDET); Industry |

WATER RESOURCE PROTECTION

| Project | Performance Indicator/measure | Key Activities to achieve output | milestones | timeline | Responsible person/organisation |
|---|--|---|--|-------------------------------------|---|
| Focused compliance monitoring and enforcement blitz | Extent (%) of compliance to set regulatory instruments; Number of jobs created for CM&E | Visible and high profile inspection and investigation of id cases; collaboration water between various regulatory agencies; quality improvement; resource protection; Job creation | CM&E Roll-out Plan | 31/03/2013 (continually thereafter) | Government (environmental enforcement authorities: EMI's & DMR Enforcement) |
| Water Catchment Management | Reactivation of catchment management fora | Water quality management; water resource optimisation | Catchment Management consultation fora established/ revitalised and maintained | 31/06/2013 | Government (DWA; DMR; DEDET; Municipalities) Industry |
| Acid Mine Drainage | % of affected water resources; % of water resources affected | Determine extent of the problem and resource requirements | Status Report on the impact of AMD in MP | 31/10/2013 | Industry; Government |
| Mine Water Reclamation | Number of projects undertaken/ identified | Explore further opportunities/ potential projects | Preliminary Findings Report on potential for MWR roll-out in MP | 31/03/2014 | Industry; DWA; CSIR; Municipalities; Academia (R&D) |

BIODIVERSITY & STRATEGIC ENVIRONMENTAL MANAGEMENT

| Project | Performance Indicator/measure | Key Activities to achieve output | milestones | timeline | Responsible person/organisation |
|--|--|--|--|------------|---|
| Alien Invasive Plant eradication | Area of land cleared; Area of land covered by AIP (to determine extent of invasion) | Provincial audit/ investigation to determine extent of AIP spread and potential savings; Beneficial uses of AIP's (e.g. Fuel; compost; furniture; etc.) | Discussion document on AIP eradication project in the to date; Audit Report on spread/ amount of AIP in Province | 30/06/2013 | Industry; DEA/ SANBI; DEDET/ MTPA; DWA; DMR; Municipalities; CBO's; Entrepreneurs |
| Preservation of threatened or affected species | Number and type of species affected; Area of land declared mining no-go areas | Environmental Impact Report on species affected and likely to be affected by mining operations | Status Report on the Impact of Mining on Biodiversity in the Province | 31/03/2013 | DEDET/ MTPA; DMR |

CLIMATE CHANGE RESPONSE

| Project | Performance Indicator/measure | Key Activities to achieve output | milestones | timeline | Responsible person/organisation |
|--|--|---|---|--------------------------------|--|
| Integrated Waste Management | Amount (tons) of recyclable waste reclaimed (e.g. Scrap tyres) | Mechanism/ Business Model for sector wide waste recycling | Business Model for Scrap Tyre Recycling in place | 31/10/2015 (Model operational) | Industry; DEDET/ DEA/ Dti/ Municipalities; Entrepreneurs |
| Mining Sector Climate Change Response Strategy Development | Extent of formulation and implementation of sector strategy | Mining Sector Climate Change Response Strategy – Adaptation and Mitigation action plans; Pilot Project to implement sectoral approach to implementation of NCCR Policy; job creation | Sector Strategy by 31/03/2014; Pilot Project by 31/03/2015 | 31/03/2015 | Industry; DEA; DMR; DWA; DEDET; Municipalities |
| Research of Green Economy development opportunities | Number and types of feasible GE opportunities; Extent (% and tons) of C footprint reduction | Renewable Energy option; Resource efficiency; Job creation | GE Development Model for the Mining Sector | 31/03/2014 | Government (Trade & Industry; Economy; Mining; Environment; Energy & Local Govt) |

INSTITUTIONAL ARRANGEMENTS

- The institutional arrangements proposed in the Lekgotla discussion document were accepted.
- The following recommendations were made:
 - The administration must be carried out within the existing regulatory provisions;
 - An invitation to participate must be extended to other stakeholders who might have been left out